

The (social) impact of the COVID-19 pandemic: How research data infrastructure can help.

NFDI InfraTalk 07.06.2021



Prof. Dr. Iris Pigeot
Coordinator of the NFDI4Health
Task Force COVID-19
*Leibniz Institute for Prevention
Research and Epidemiology –
BIPS*


Prof. Dr. Stefan Liebig
Chair of the Working Group „Corona“
of the RatSWD
*Socio-Economic Panel (SOEP)
at DIW Berlin*

RatSWD.

German Data Forum

NFDI InfraTalk
07 June 2021

KonsortSWD 



Better results through interoperability and standardised RDM: Empirical social science research in social crises

Prof. Dr. Stefan Liebig

Chair of the Working Group “Corona“ of the RatSWD
Director of the Socio-Economic Panel (SOEP) at DIW Berlin

How we started

- Since March 2020: COVID-19 pandemic posed a variety of social science questions and led to the **emergence of a large number of empirical studies**
- Challenges: **Data quality, data sharing** to exploit research potentials
- Creation of the **Best_FDM project** which addresses the following areas:
 - **Mapping of social science research on COVID-19 in Germany:** establishment of a database on empirical studies on the social implications of the pandemic
 - **Enhance data harmonisation and interoperability:** development of a standard questionnaire
 - **Improve networking and standardised RDM in social crises:** organisation of workshops; elaboration, publication and promotion of recommendations



Who we are: Project Best_FDM*

- Funded by Federal Ministry of Education and Research
- Duration: December 2020 – November 2022
- Funding Volume: ~200.000 €
- Working group of the RatSWD with following experts:
 - Prof. Dr. Cordula Artelt, IfBi/ University of Bamberg
 - Prof. Dr. Thorsten Faas, FU Berlin
 - Prof. Dr. Monika Jungbauer-Gans, DZHW/Leibniz University Hannover
 - Prof. Dr. Stefan Liebig, SOEP at DIW Berlin/FU Berlin
 - Prof. Dr. Anja Strobel, Chemnitz University of Technology
 - Prof. Dr. Mark Trappmann, IAB/ University of Bamberg
- Coordination: RatSWD Office at WZB Berlin Social Science Center

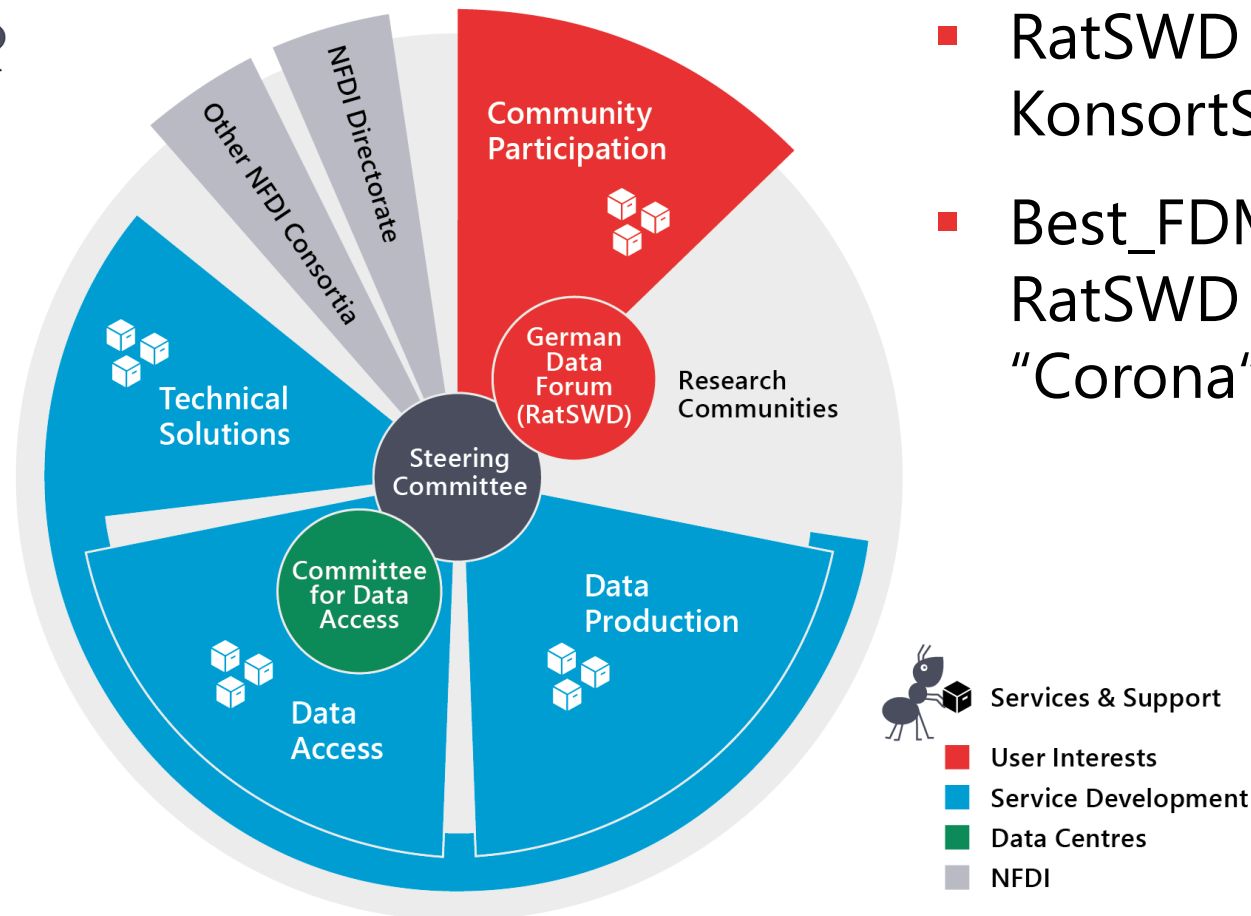
SPONSORED BY THE



Federal Ministry
of Education
and Research

* Best_FDM = Bessere Ergebnisse durch Interoperabilität und standardisiertes Forschungsdatenmanagement:
Vernetzung empirischer sozialwissenschaftlicher Forschung in gesellschaftlichen Krisen

Our connection to the NFDI



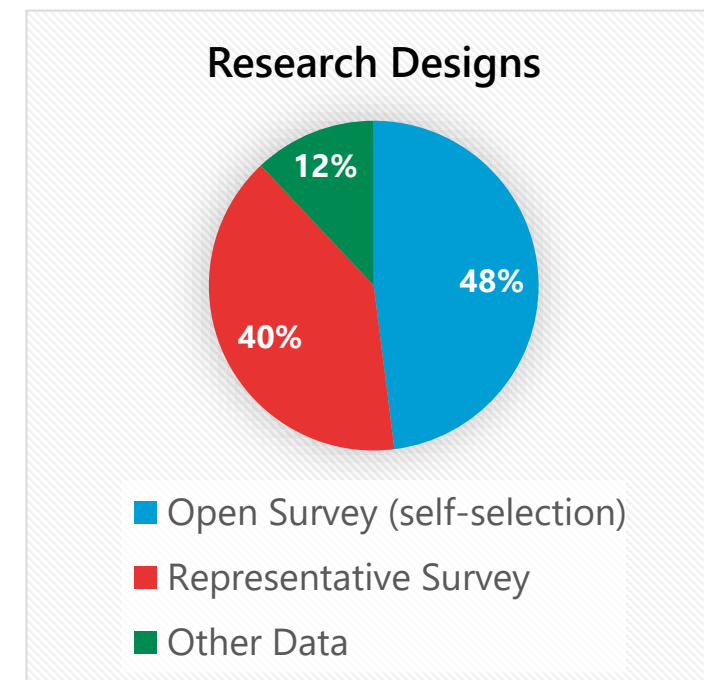
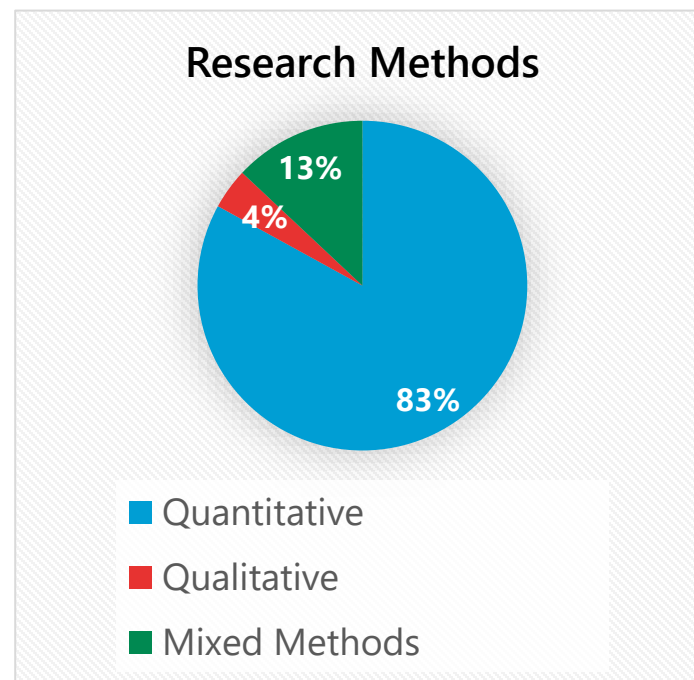
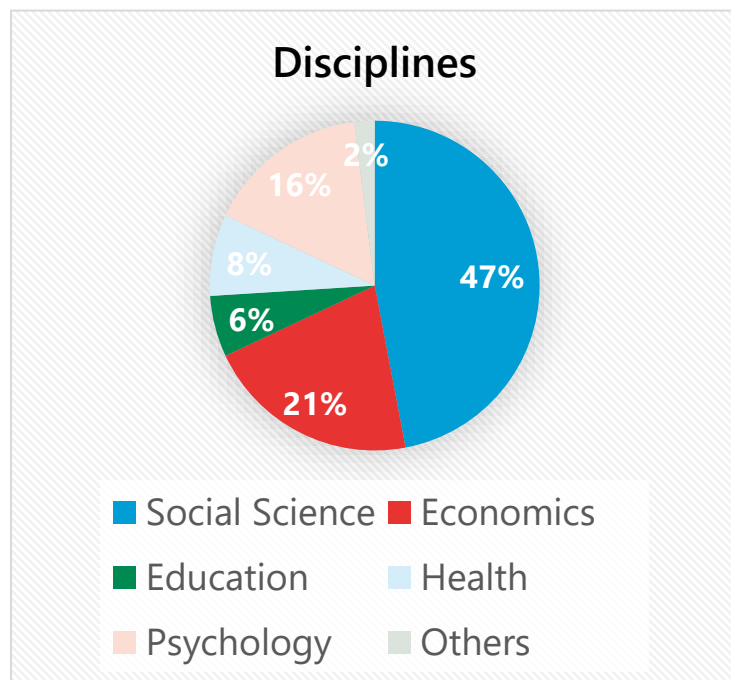
- RatSWD part of KonsortSWD in the NFDI
- Best_FDM = additional RatSWD working group "Corona"

Mapping of social science research on COVID-19

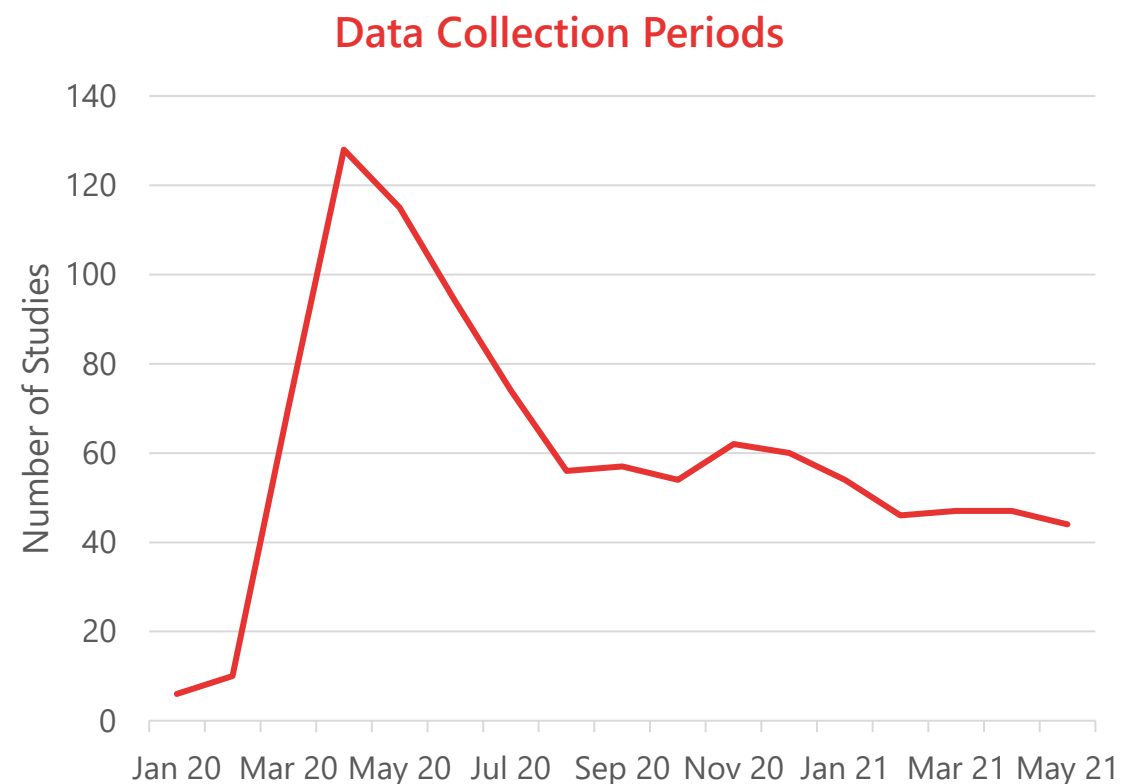
- Central component of the project: **a collection of German research projects** which empirically examine the effects of the COVID-19 pandemic on society
- How do we collect the studies?
 - Monitoring the German social science community, especially the institutions represented in and the data centres accredited by the RatSWD
 - Newsletter of the Informationsdienst Wissenschaft (IDW): <https://idw-online.de/en/>
 - Being individually approached by projects/researchers

<https://www.konsortswd.de/en/ratswd/topics/corona/>

Mapping of social science research on COVID-19



Mapping of social science research on COVID-19



Data Access and Openness



22 %
of studies made
their datasets
openly accessible
or are planning
to do so

83 %
of studies shared
their results as
open access
publications

Awareness of the importance of **Data Sharing** practices could be enhanced, particularly among researchers in small ad hoc projects

Data harmonisation and interoperability

- Analysis of **measurement instruments** in different surveys:
 - Socio-demographic variables: gender, age, education, household income ...
 - Variables related to COVID-19: infection with the virus, mental well-being, acceptance of political measures, received vaccination, vaccination willingness...
- Preliminary **results**:
 - High comparability of some socio-demographic variables among well-established (panel) studies, improvement needed among ad-hoc surveys
 - Lack of standards for crisis-related variables



Aim:
Development of a **standard questionnaire** to make data more interoperable

Networking and standardised RDM in social crises

Further topics addressed by the project:

- Which **data infrastructure** is needed for the current pandemic and future crises?
- How can research data management ensure **quality** assured and **interoperable (meta-)data** and results?
- Need for a **central contact point** for national and international exchange, in order to interlink research projects?

➤ Discussion in workshops with additional experts



Our central objectives

- Improve **interoperability** and **standardised** research data management
- Increase awareness of **FAIR data**
- Enhance a cultural change towards **Open Science**
- Facilitate **networking** of social science research in social crises
- **Strengthen** the research data infrastructure for social crises

Thank you!

- **Collection of Studies:**

<https://www.konsortswd.de/en/ratswd/topics/corona/>

- **Contact at the RatSWD Office:**

Andrés Saravia
Research Associate

+49 30 25491-822

asaravia@ratswd.de

Follow us on Twitter!

<https://twitter.com/ratswd>

<https://twitter.com/konsortswd>

