



RWI GRID DATA

Small Scaled Data for Research

Philipp Breidenbach

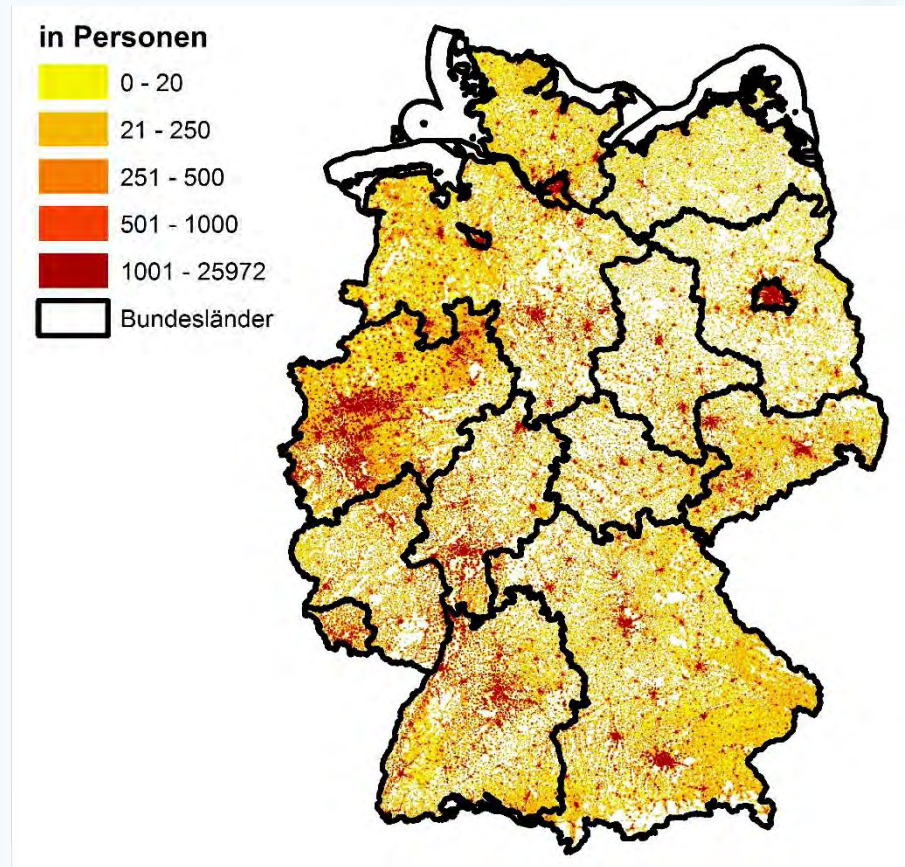
- **FDZ Ruhr am RWI (Research Data Center)**
 - Scientific division of the RWI – Leibniz Institute for Economic Research
 - Public Funded Research Institute organized in the Leibniz Organization
 - Research Data Center founded in 2012 aiming at providing existing RWI-datasets for researcher
 - Heading towards a focus on **“Innovative Small-scaled Datasets”**

What we offer

- We aim at providing a detailed and comprehensive characterization of socio-economic conditions in small spatial units
- Focusing on Grid level (Rasterdaten)
 - Grids as systematic (synthetic) units, separating Germany in equal squares (in our case squares of 1X1 km)
 - Homogenous spatial definition not depending on administrative delimitations
 - Our grid-definition follows the EU “Inspire-Directive” making our grid data compatible to the majority of other grid data
- *Note:* Grids can also be intersected into other spatial units (Postalcode-Areas, Communities, City-Districts)
 - FDZ Ruhr offer the service to intersect our grid data into other spatial units

- **Population Data**
- **Local conditions influencing Demographic Developments**
- **Data on Small-Scaled Demographic Projections**
Project – In Progress

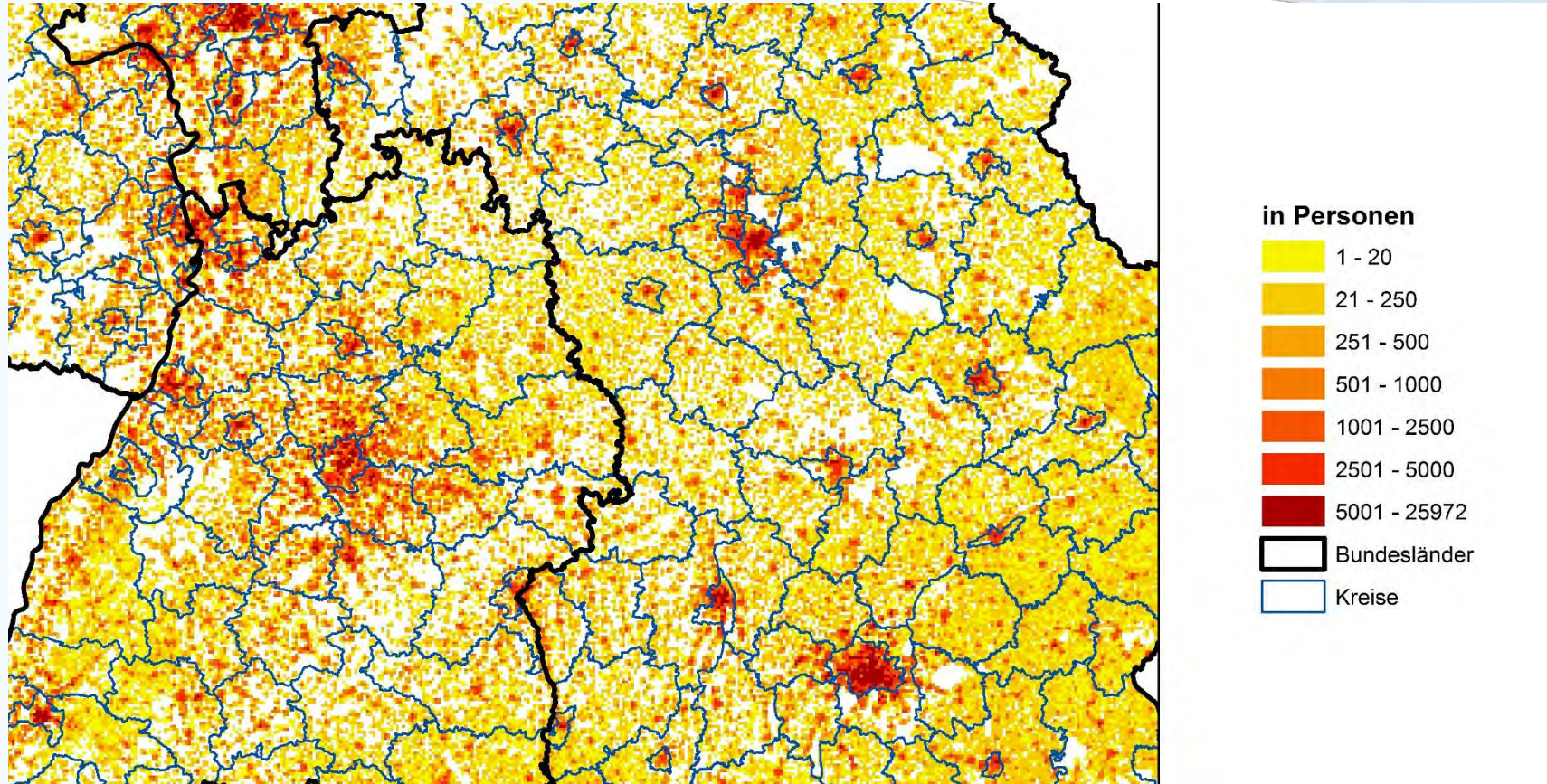
Population in Germany, 2015, 1sqkm-Grids



Own calculations according to microm.

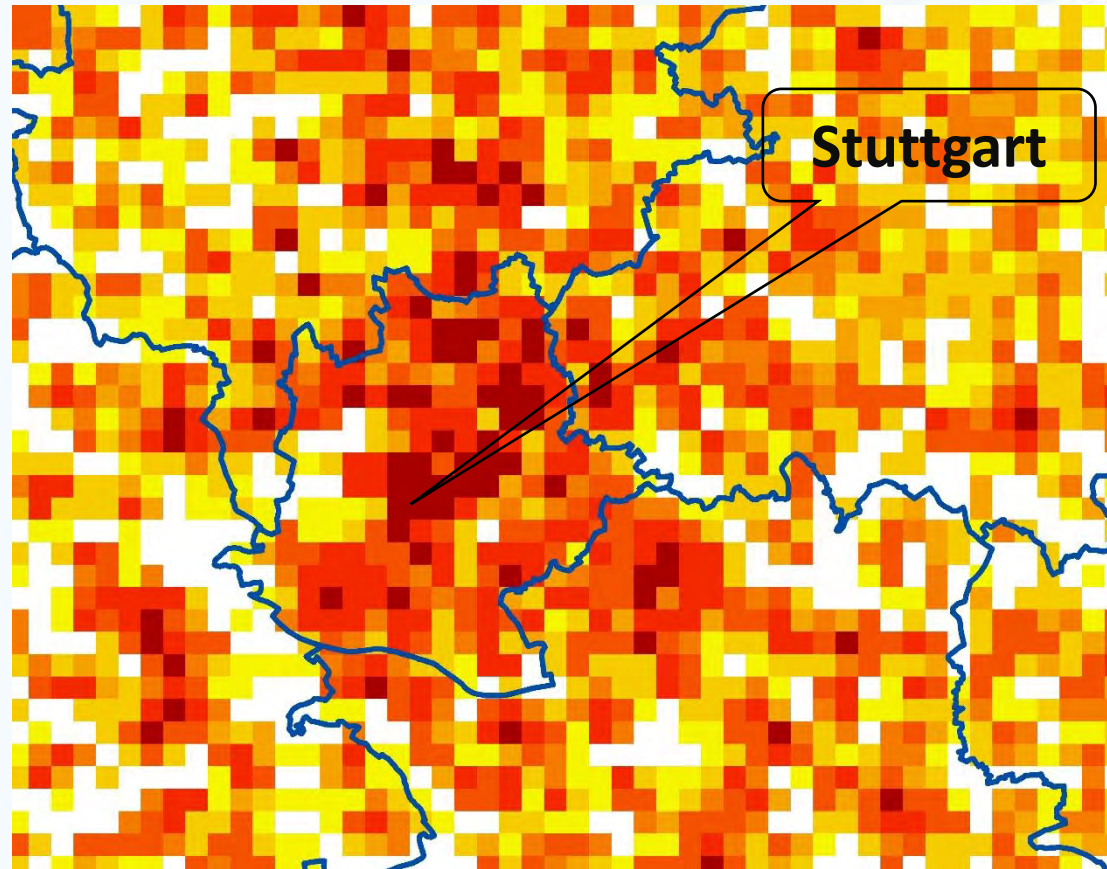
- Population data are also offered separated in:
 - Age groups
 - 17 age groups separated by sex
 - Migration
 - Households with migration background, separated in 11 ethnological groups
 - Information on Household types
 - Separation in Single-, Pair- or Family-Household

Population in Southern Germany, 2015, 1sqkm-Grids



Own calculations according to microm.

Population in and around Stuttgart , 2015, 1sqkm-Grids

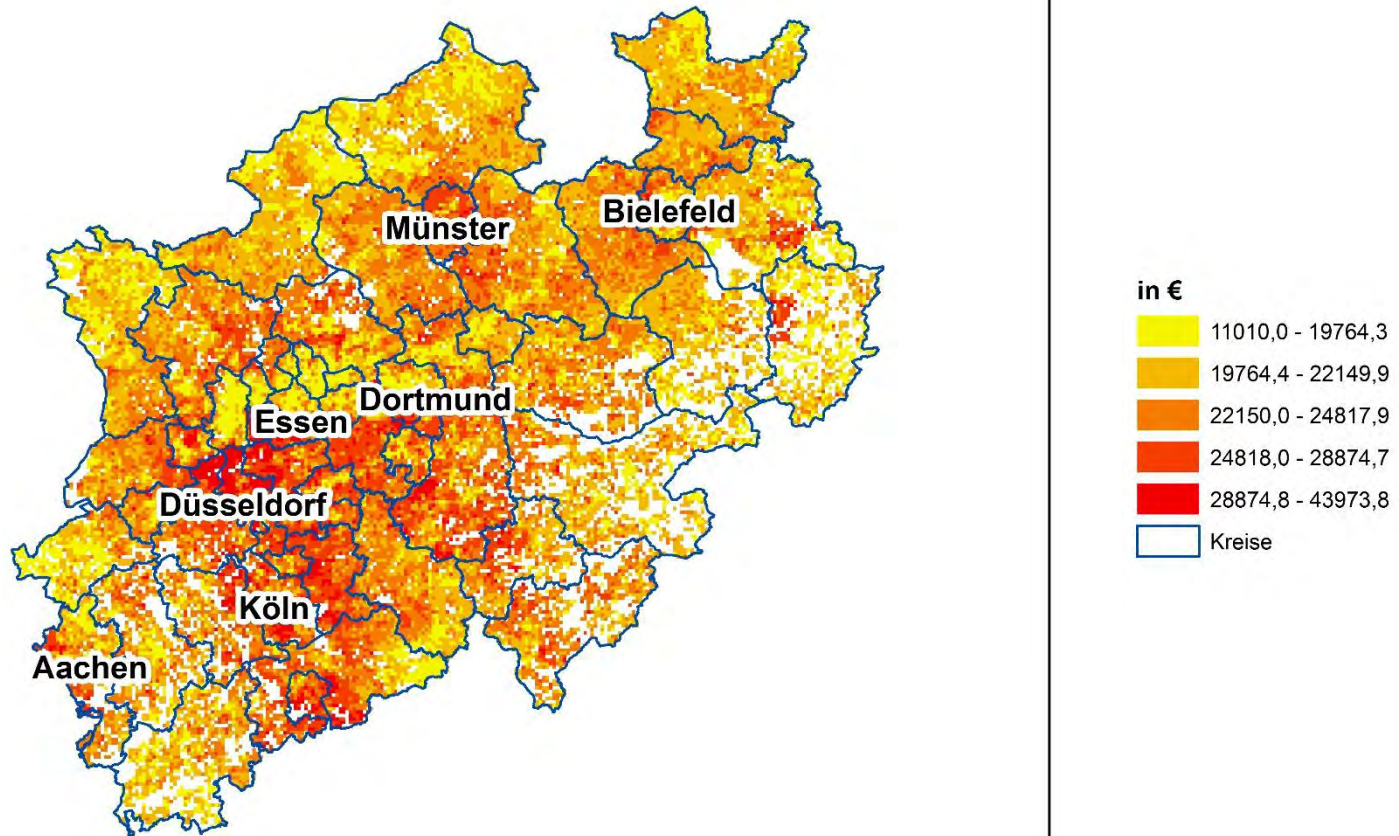


Own calculations according to microm.

- Much more information compared to standard county- or community-level data
- Stand-alone analyses based on the offered data
- Using dataset to enrich information on existing dataset/observations
 - Neighborhood-Information for Interview-Observation
 - Describing socio-economic environment
- Compatible to background-maps (e.g. OpenStreet Map) for visualization

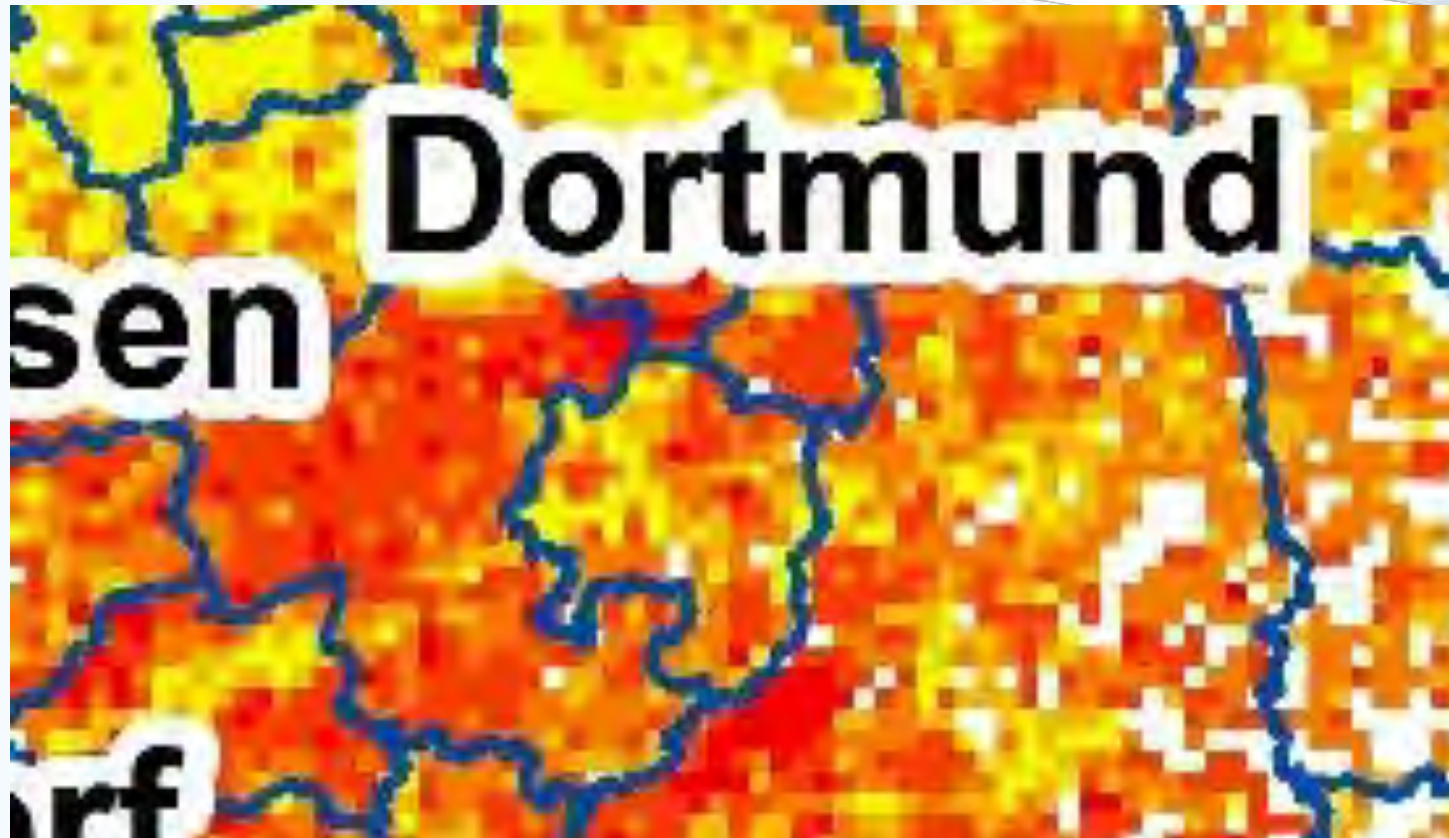
- **Population Data**
- **Local conditions influencing Demographic Developments**
- **Data on Small-Scaled Demographic Projections**
Project – In Progress

Income per Capita, North Rhine-Westphalia (NRW), 2015, 1sqkm-Grids



Own calculations according to microm.

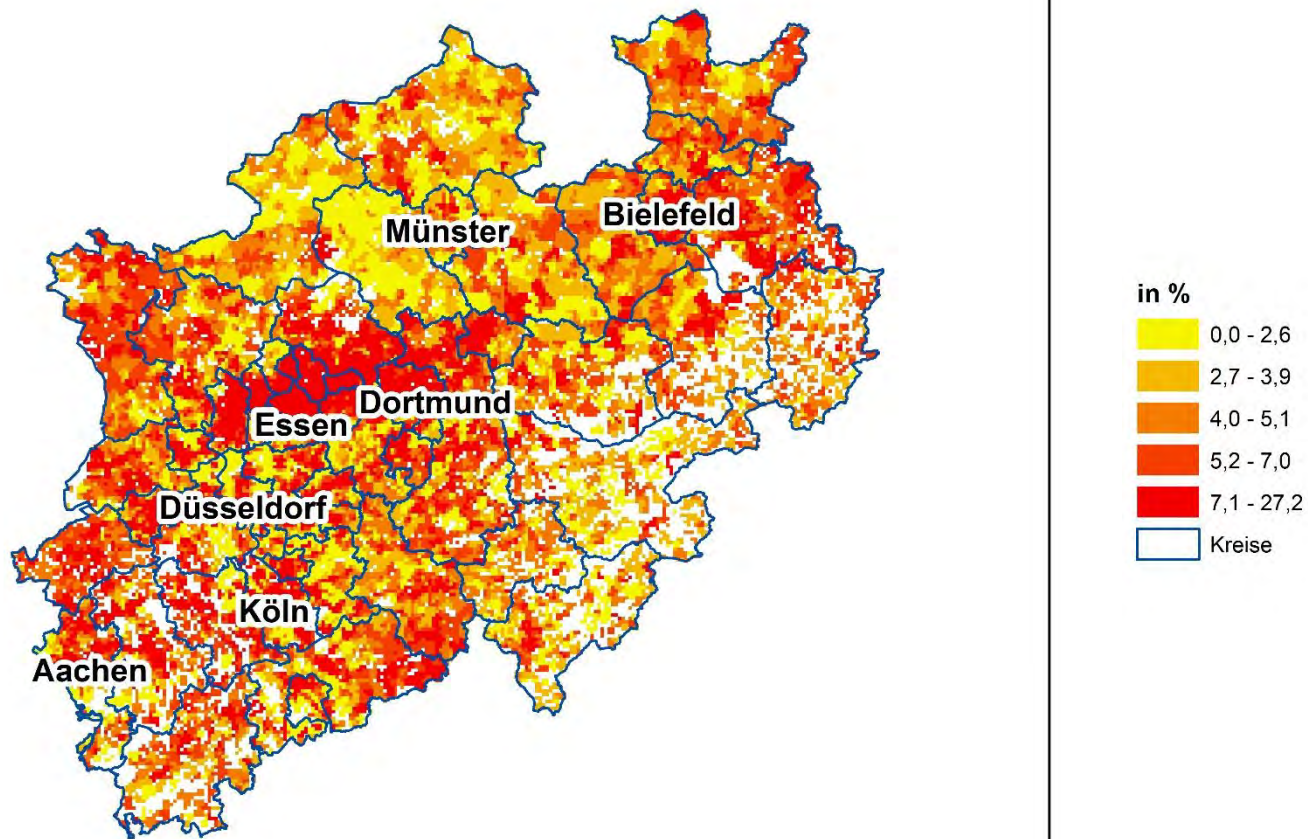
Income per Capita, NRW, 2015, 1sqkm-Grids



Own calculations according to microm.

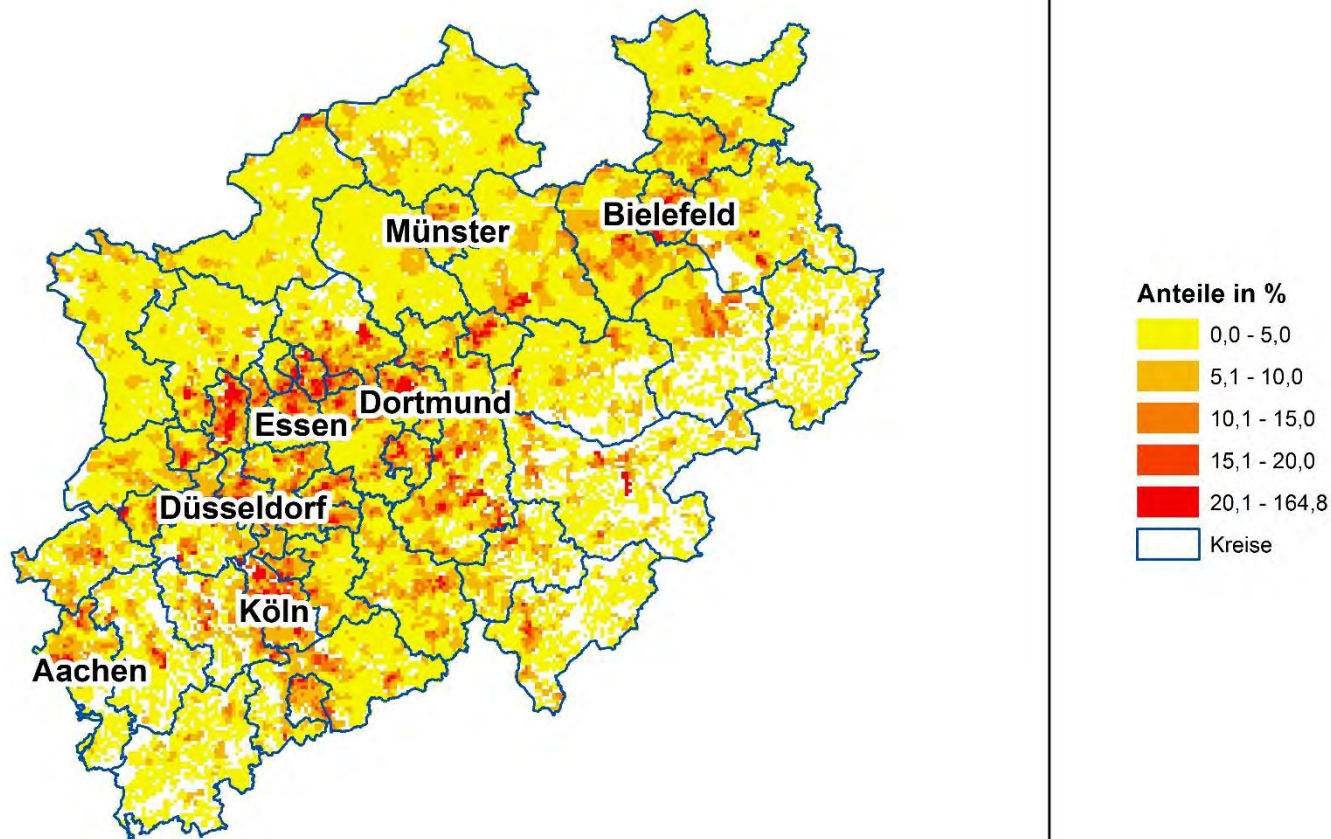
Unemployment Rate

NRW, 2015, 1sqkm-Grids



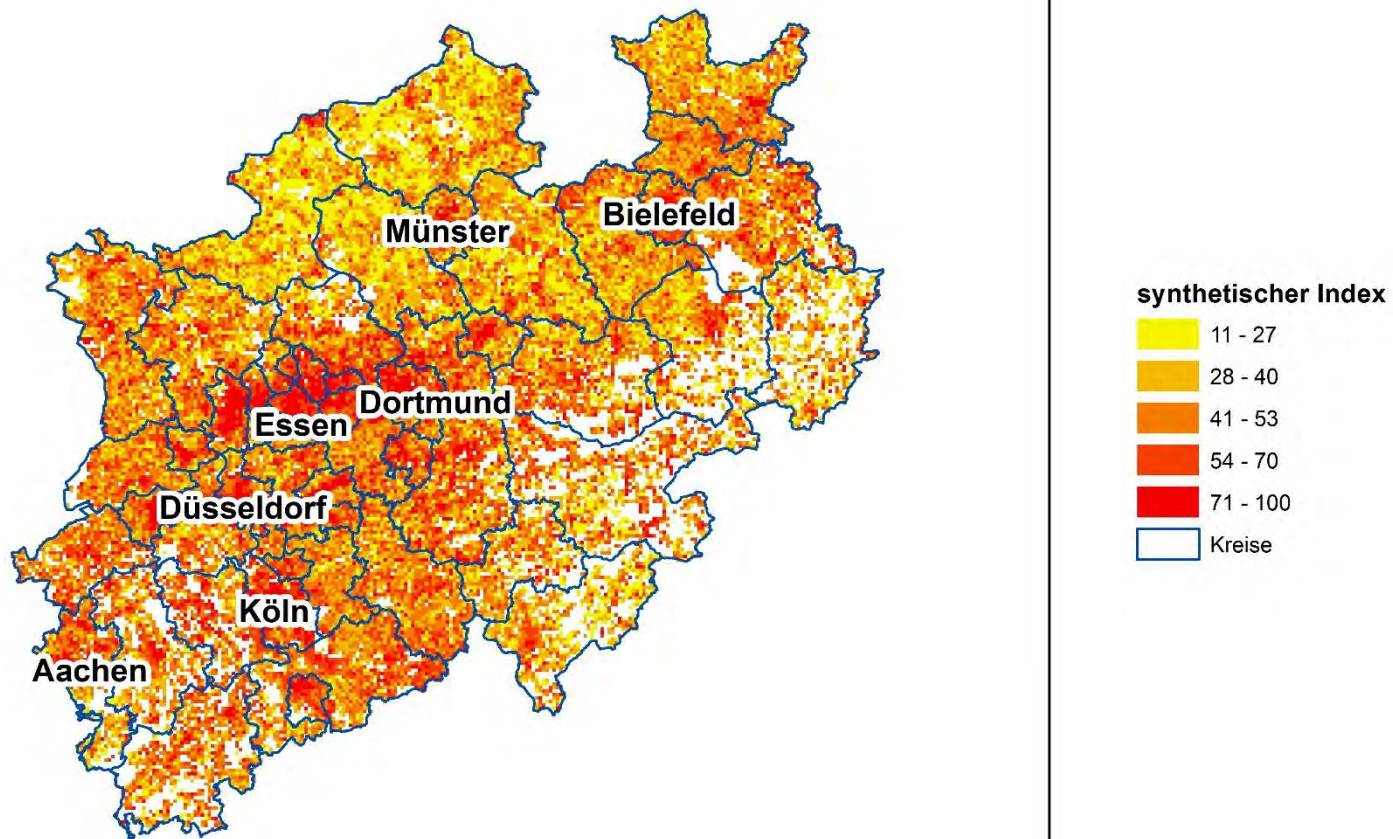
Own calculations according to microm.

Share of migrants (on household level) NRW, 2015, 1sqkm-Raster



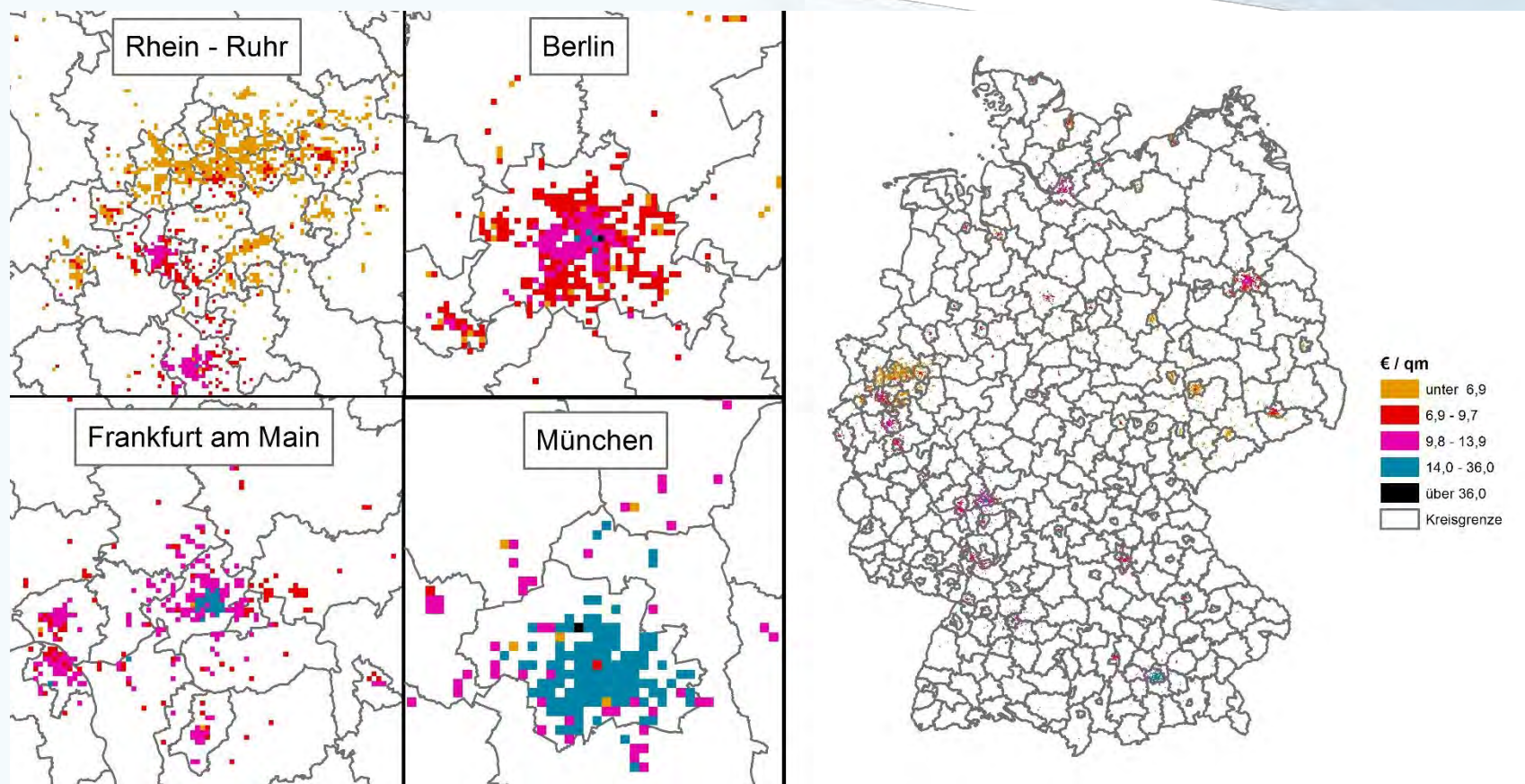
Own calculations according to microm.

Credit Default Rate, NRW, 2015, 1sqkm-Grids



Own calculations according to microm.

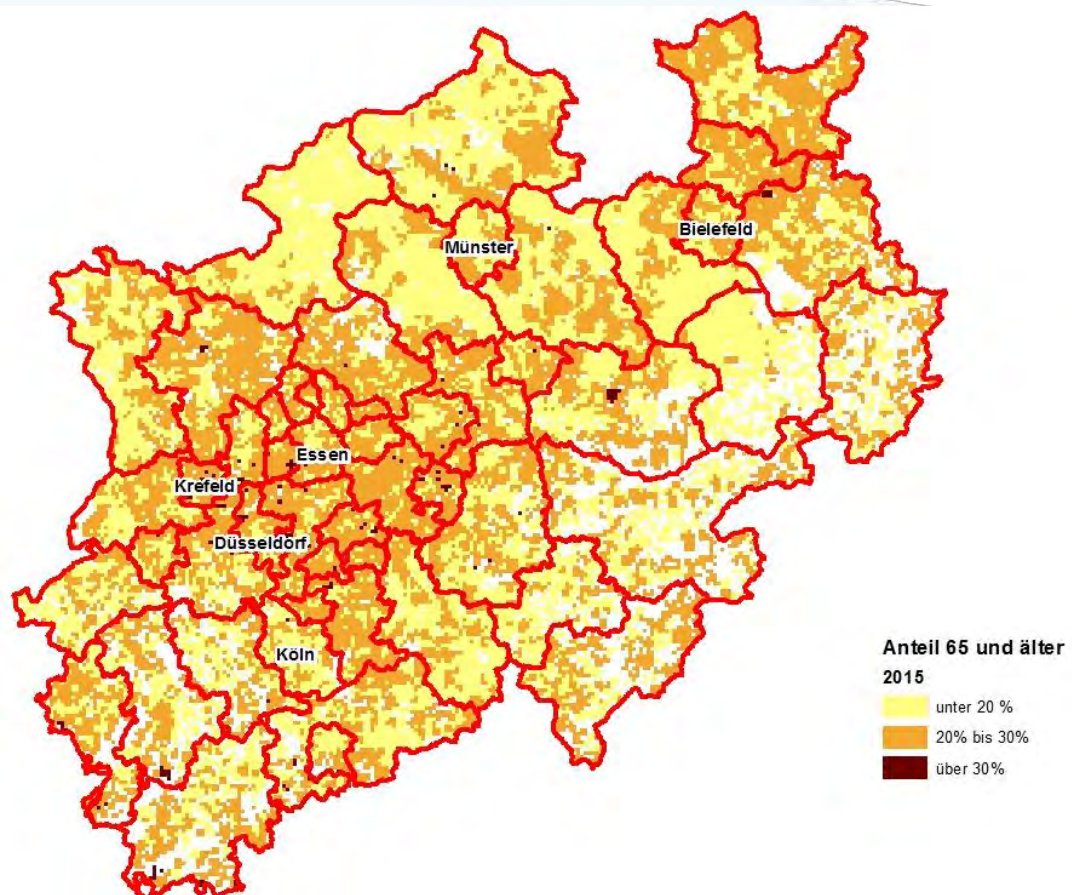
Rents for apartments below 60 sqm, 2015, 1sqkm-Grids



Own calculations according to immobilienscout24.de.

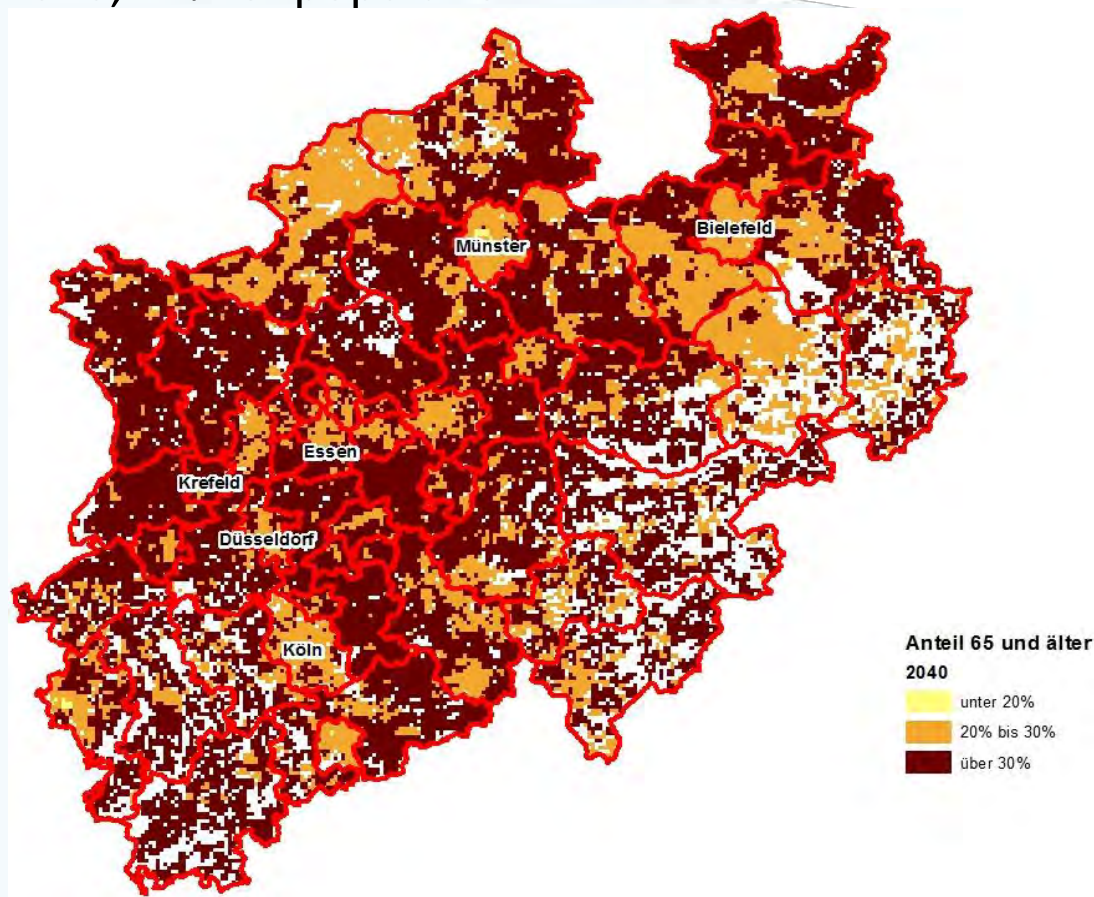
- **Population Data**
- **Local conditions influencing Demographic Developments**
- **Data on Small-Scaled Demographic Projections**
Project – In Progress

Share of people aged 65+ 2015, in % of population



Own calculations according to microm.

Share of people aged 65+ 2040, in % of population



Own calculations according to microm and Destatis.

Selected Datasets

- **Energy Consumption**
 - Panel Dataset on Energy consumption of Households
 - Includes information on the consumption of each energy source, housing information and socio-economic characteristics
 - Survey Data collected annually (operated by forsa)
- **Minijob-Surveys**
 - Two datasets on minijobs in Germany (NRW)
 - Survey Data on employers of minijobs focusing on size, wages and reasons for minijob-employment
 - Survey Data on employees of minijobs focusing on employment situation, wages, reasons for the minijob, social benefits from the employer, socio-economic characteristics
 - Own surveys conducted in 2012

Getting Access to Our Data

- Detailed descriptions and DOIs of our data on the website <http://fdz.rwi-essen.de>
 - *Datenangebot*
- Get access to our data via an online form on the website <http://fdz.rwi-essen.de>
 - *Datenzugang*
- Contact us if you need any further information on the available data
 - fdz@rwi-essen.de
 - [+49 201 8149328](tel:+492018149328)

Find more information on other datasets on our website:

<http://fdz.rwi-essen.de>