



Before we start, some important information

- CBS is the only official statistics office in the Netherlands.
- We are (mainly) a register-based statistics office.
- Optimal usage of our statistical output and microdata is a core value of CBS.
- We are not just a NSI, we are a news agency



Under which legal base is access to microdata possible?

- CBS-law: DG can accredit organizations:
 - Dutch universities and official planning agencies.
 - Other organizations with a (primary) research goal and a good reputation. Must have no administrative tasks.
- Researchers working at an accredited organisation can get access after signing non-disclosure agreement and passing awareness test.
- Projectproposals are mandatory. Need-to-know based access, outputchecks.



Under which legal bases access to microdata is possible?

In short:

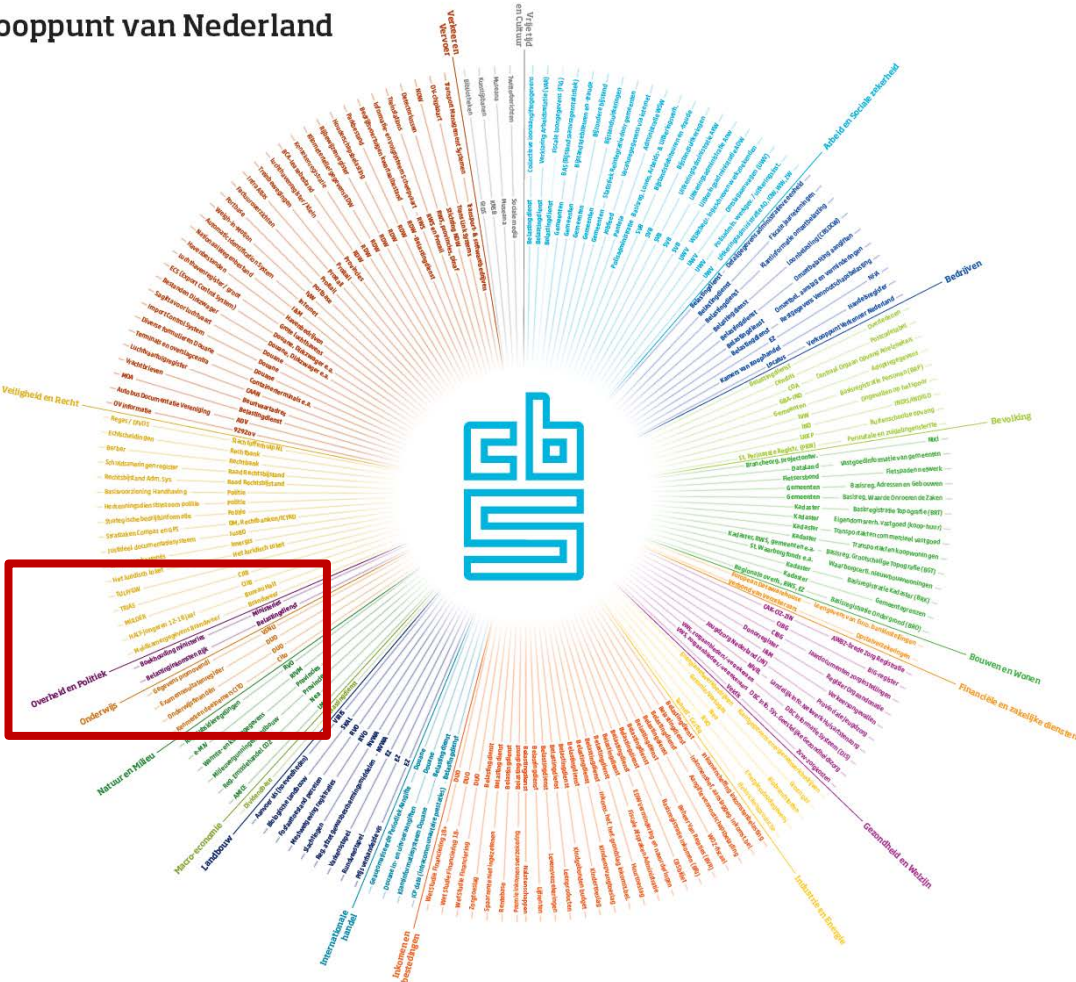


Types of data available

- Pseudonymized data from hundreds of administrations and registers with 100% coverage
- Datasets can be linked.



CBS, dataknooppunt van Nederland



Onderwijs

Het Juridisch Loket

TULP/GW

TRIAS

MULDER

MULDER —
HALT-jongeren 12-18 jaar
gegevens Br

MULDER
HALT-jongeren 12-18 jaar
Meldkamergegevens Brandweer
ouding ministeries
en Rijk

- Meldkamergegevens
- Boekhouding ministeries
- Belastinginkomsten Rijk
- ... en promovend

- Gegevens promovendi
- Examenresultaten
- Onderwijsfinanciën

- Gegevens promovende
- Examenresultatenregister
- Onderwijsfinanciën
- merken deelnem
- tierege

- Examenresultaten
- Onderwijsfinanciën
- marken deel

- Kenmerken deelen
- Subsidieregelingen

merken
g. subsidieregels
udegegevens
land

gevens
landbouw

...gegevens
...land



Bel

Brand

Bureau

Can researchers from abroad use Dutch microdata?

- Yes.

If so: under which conditions?

- The same as Dutch researchers.



Experiences with misuse of microdata by researchers?

- Some. Bypassing the outputcheck by copying from the screen, bypassing need-to-know by trying out a new project using data in another project.
- Combination of enthusiasm and ignorance, hence awareness testing.
- Researchers pointing out weaknesses also happens.



How to access Dutch microdata?

24/7 in 10 easy steps:

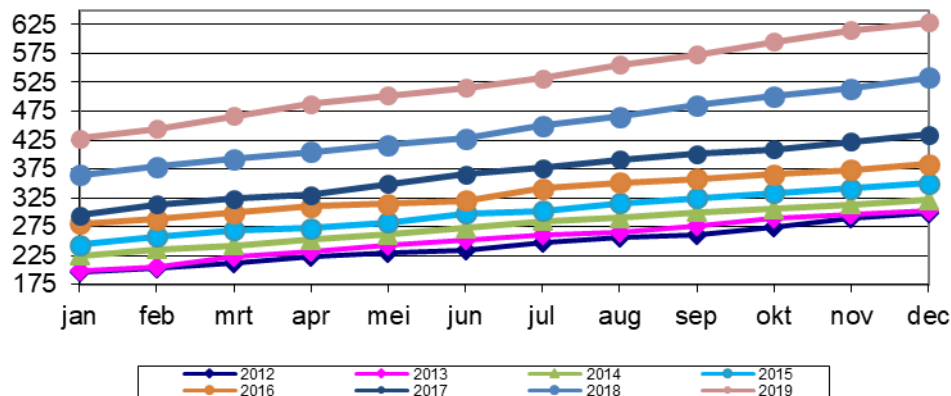
1. Find a private spot
2. Start computer
3. Connect to internet (secure WiFi or wired)
4. Start Virtual Private Network (VPN)
5. Start Citrix, enter SecurID token code
6. Enter username, password
7. Answer awareness question
8. Select project using project code
9. Projectspecific username, password
10. Enter TAN-code



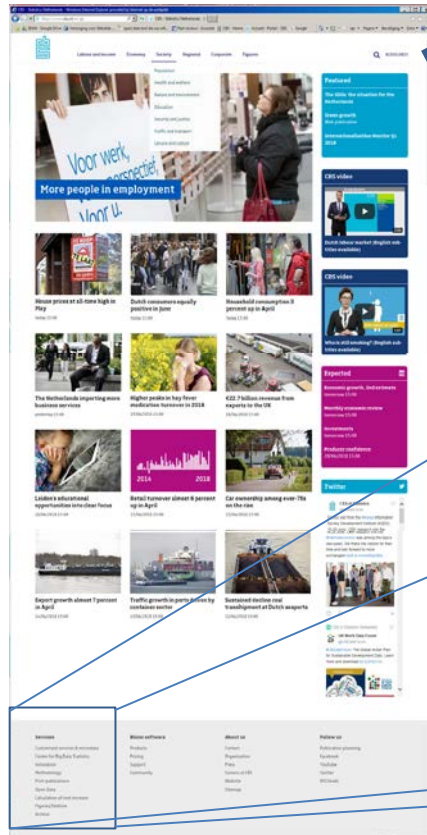
In 2019 we supported:

- 629 projects,
- involving 1143 researchers
- from 190 different organizations
- using 4582 datasets
- generating 1843 outputs.

Trend: number of projects



More information: www.cbs.nl



set language
to english

click

Services

Customised services & microdata

Center for Big Data Statistics

Innovation

Methodology

Print publications

Open Data

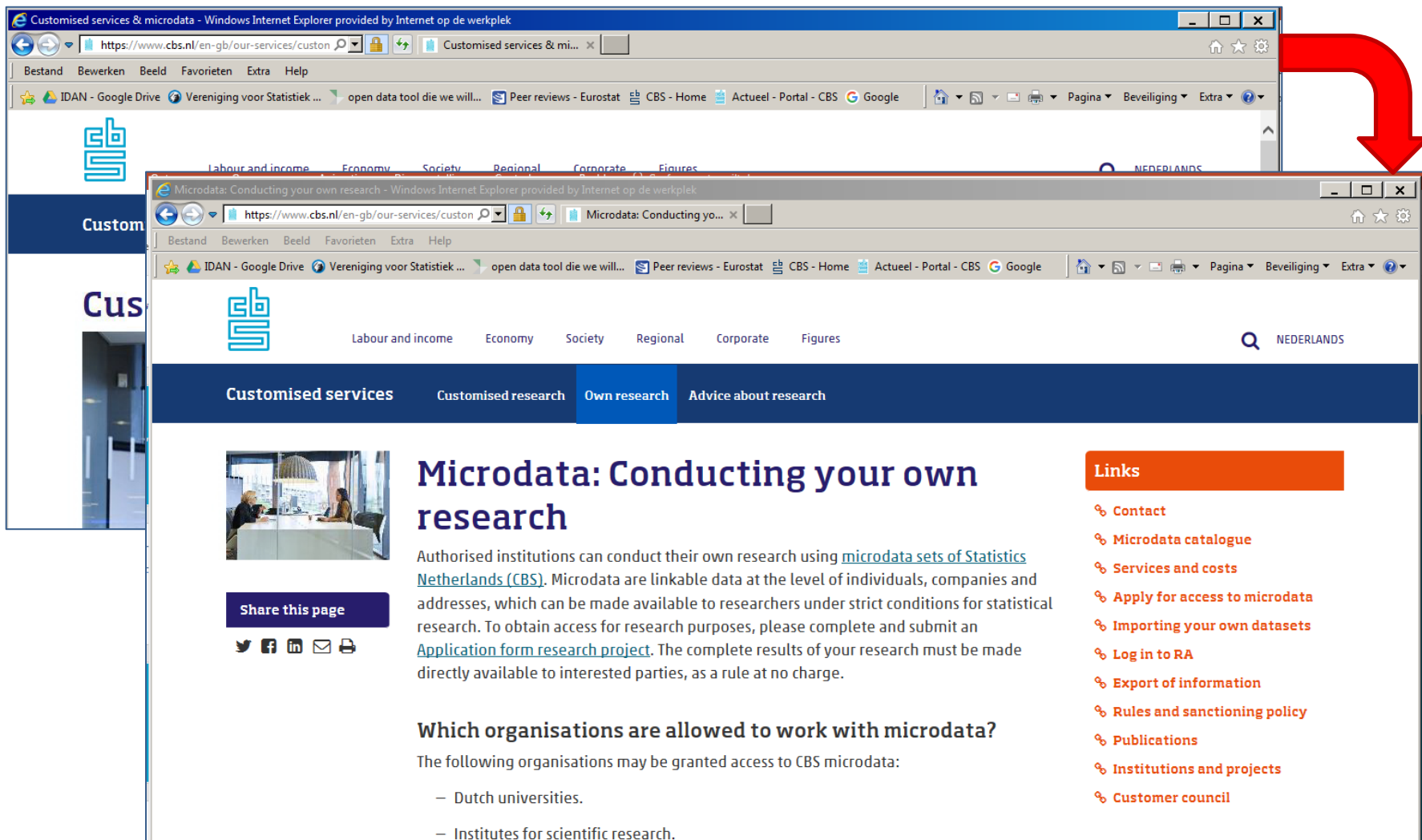
Calculation of rent increase

Figures/StatLine

Archive

scroll all the way down





Customised services & microdata - Windows Internet Explorer provided by Internet op de werkplek

https://www.cbs.nl/en-gb/our-services/custom

Bestand Bewerken Beeld Favorieten Extra Help

IDAN - Google Drive Vereniging voor Statistiek ... open data tool die we will... Peer reviews - Eurostat CBS - Home Actueel - Portal - CBS Google Pagina Beveiliging Extra

Labour and income Economy Society Regional Corporate Figures

Microdata: Conducting your own research - Windows Internet Explorer provided by Internet op de werkplek

https://www.cbs.nl/en-gb/our-services/custom

Bestand Bewerken Beeld Favorieten Extra Help

IDAN - Google Drive Vereniging voor Statistiek ... open data tool die we will... Peer reviews - Eurostat CBS - Home Actueel - Portal - CBS Google Pagina Beveiliging Extra

Labour and income Economy Society Regional Corporate Figures

Customised services Customised research Own research Advice about research

Microdata: Conducting your own research

Authorised institutions can conduct their own research using [microdata sets of Statistics Netherlands \(CBS\)](#). Microdata are linkable data at the level of individuals, companies and addresses, which can be made available to researchers under strict conditions for statistical research. To obtain access for research purposes, please complete and submit an [Application form research project](#). The complete results of your research must be made directly available to interested parties, as a rule at no charge.

Which organisations are allowed to work with microdata?

The following organisations may be granted access to CBS microdata:

- Dutch universities.
- Institutes for scientific research.

Links

- Contact
- Microdata catalogue
- Services and costs
- Apply for access to microdata
- Importing your own datasets
- Log in to RA
- Export of information
- Rules and sanctioning policy
- Publications
- Institutions and projects
- Customer council

Catalogue of services

Microdata services

2018



Microdata services

Microdata@cbs.nl
+31(0)70-3375444 (RA helpdesk for technical questions)
+31(0)70-3375006 (account managers for questions about new or ongoing projects)

- 35 different services.
- Some are mandatory, some are optional.
- Most services will be charged!
- We do help researchers to keep the costs down.
- Catalogue available on the website of CBS



Facts that matter