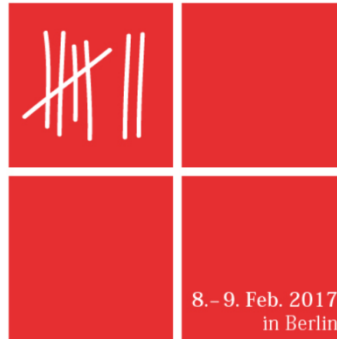


---

# Open Science benötigt eine föderierte Forschungsdateninfrastruktur

7 | Konferenz für Sozial- und Wirtschaftsdaten  
**Forschung. Daten. Infrastruktur.**

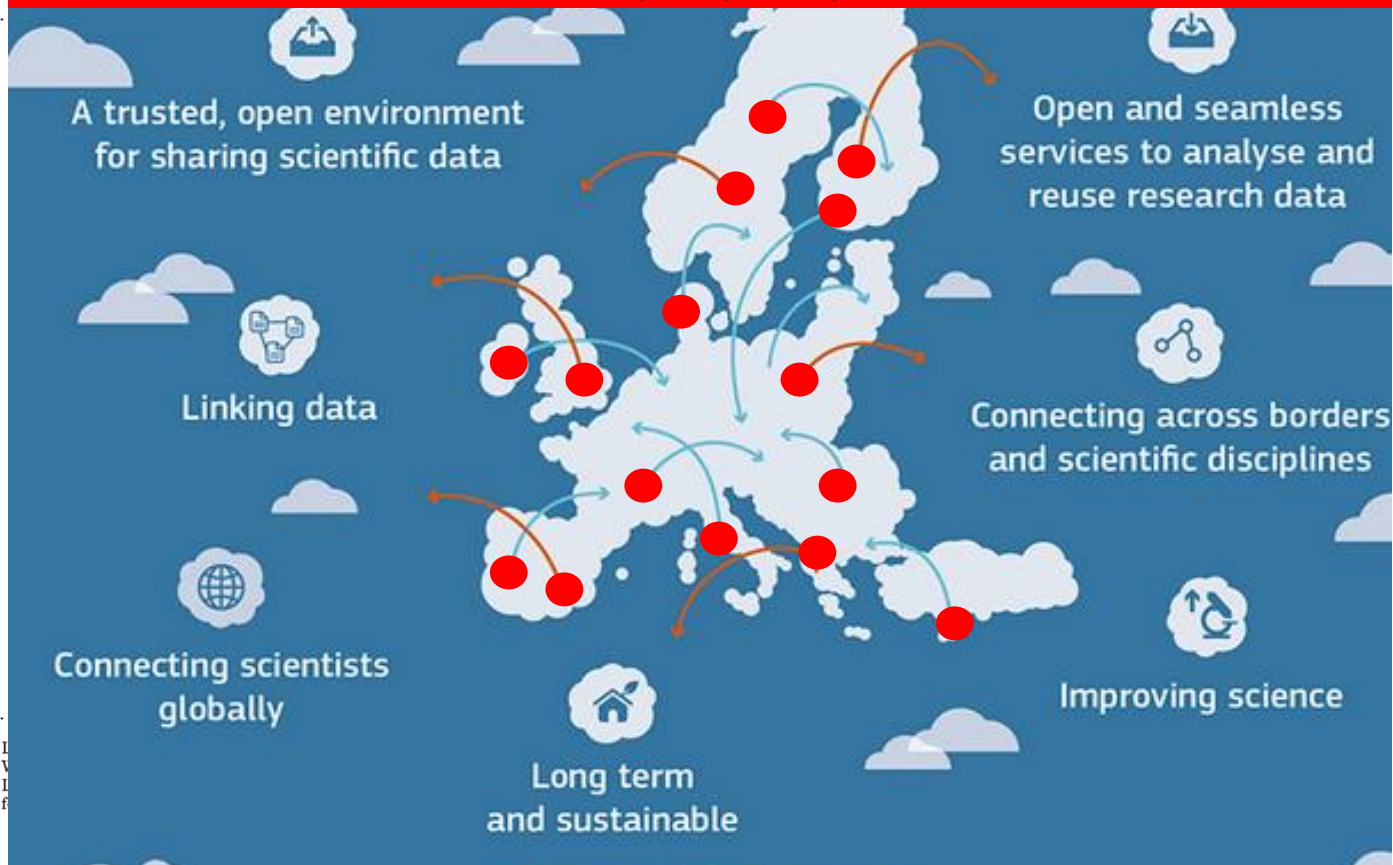


*9. Februar 2017*  
*Klaus Tochtermann*

# EUROPEAN OPEN SCIENCE CLOUD

BRINGING TOGETHER CURRENT AND FUTURE DATA INFRASTRUCTURES

## What does *Bringing together* mean?



# GeRDI – Generic Research Data Infrastructure

---

## Infrastructures

**ZBW** Leibniz-Informationzentrum  
Wirtschaft  
Leibniz Information Centre  
for Economics

**ZIH**  
Zentrum für Informationsdienste  
und Hochleistungsrechnen

**lrz** Leibniz-Rechenzentrum  
der Bayerischen Akademie der Wissenschaften

**DFN**  
DEUTSCHES FORSCHUNGNETZ

**CAU**  
Christian-Albrechts-Universität zu Kiel

## Communities

**SOEP**

Virtual Observatory of the Alps

**future ocean**  
KIEL MARINE SCIENCES

Environmental, Resource and  
Ecological Economics

---

**ZBW** Leibniz-Informationszentrum  
Wirtschaft  
Leibniz Information Centre  
for Economics

**GeRDI**  
Generic Research Data  
Infrastructure

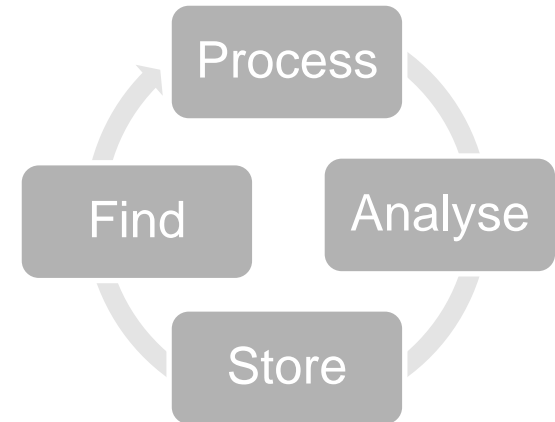


# Objectives

---

## Support

- Cross-disciplinary research data management
- Important phases in data life cycle





GeRDI

Generic Research Data  
Infrastructure

IMB

Institut für Medizinische Informatik und Biometrie



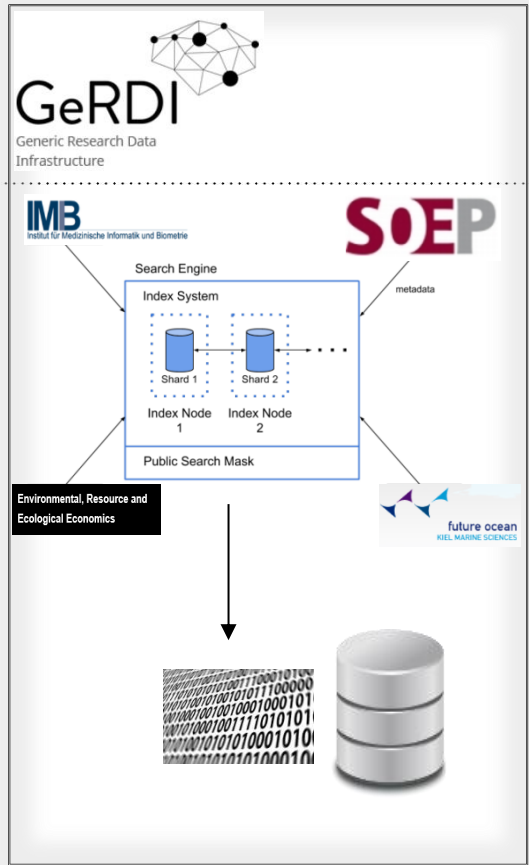
Environmental, Resource and  
Ecological Economics

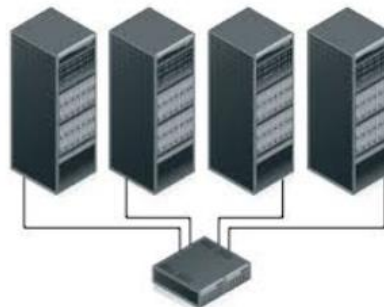
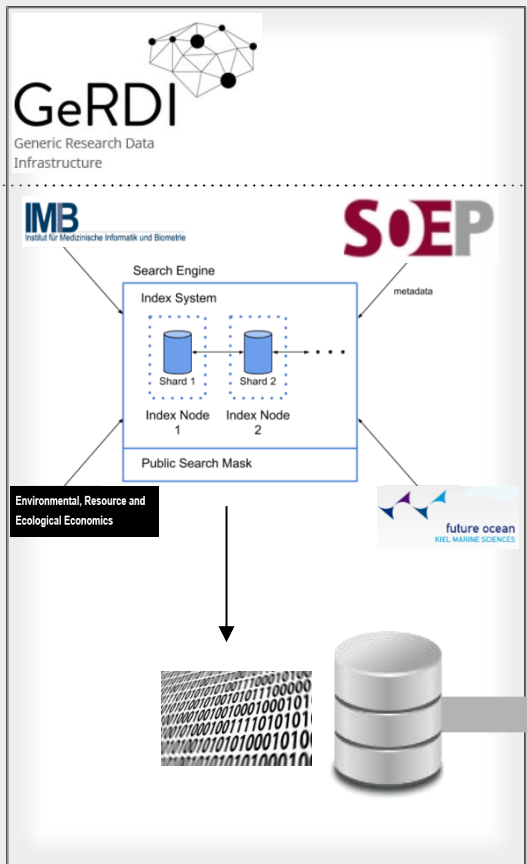
SOEP

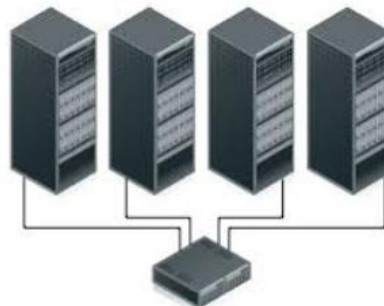
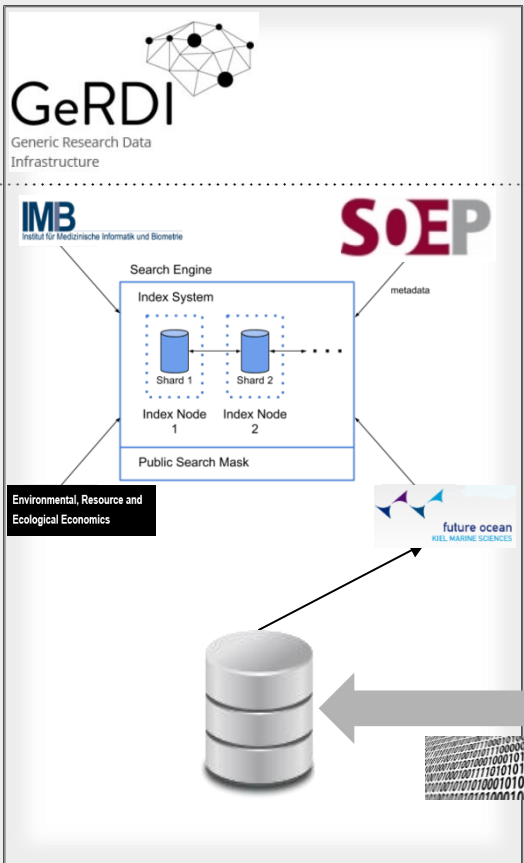
metadata



future ocean  
KIEL MARINE SCIENCES









# Thank you!

---



<http://www.gerdi-project.de/>

Klaus Tochtermann  
Kiel / Hamburg  
Email: [k.tochtermann@zbw.eu](mailto:k.tochtermann@zbw.eu)